

Who is CPS Energy?

Established in 1860, we are the nation's largest public power, natural gas and electric company, providing safe, reliable, and competitively-priced service to **860,934** electric and **358,495** natural gas customers in San Antonio and portions of 10 adjoining counties. Our customers' combined energy bills rank among the lowest of the nation's 20 largest cities – while providing about \$360 million to San Antonio every year - almost \$1M every day.

As a trusted and strong community partner, we continuously focus on job creation, economic development and educational investment. True to our **People First** philosophy, we are powered by our skilled workforce, whose commitment to the community is demonstrated through our employees'

volunteerism in giving back to our city and programs aimed at bringing value to our customers.

We are among the top public power wind energy buyers in the nation and number one in Texas for solar generation.



How can you follow the progress of this project?

The CPS Energy project team will post project information on the CPS Energy website at www.cpsenergy.com. (search: Buckeye)

Who can answer your questions?

The website will include regular updates on the project as steps are completed.

Also, you may call, write or e-mail to:

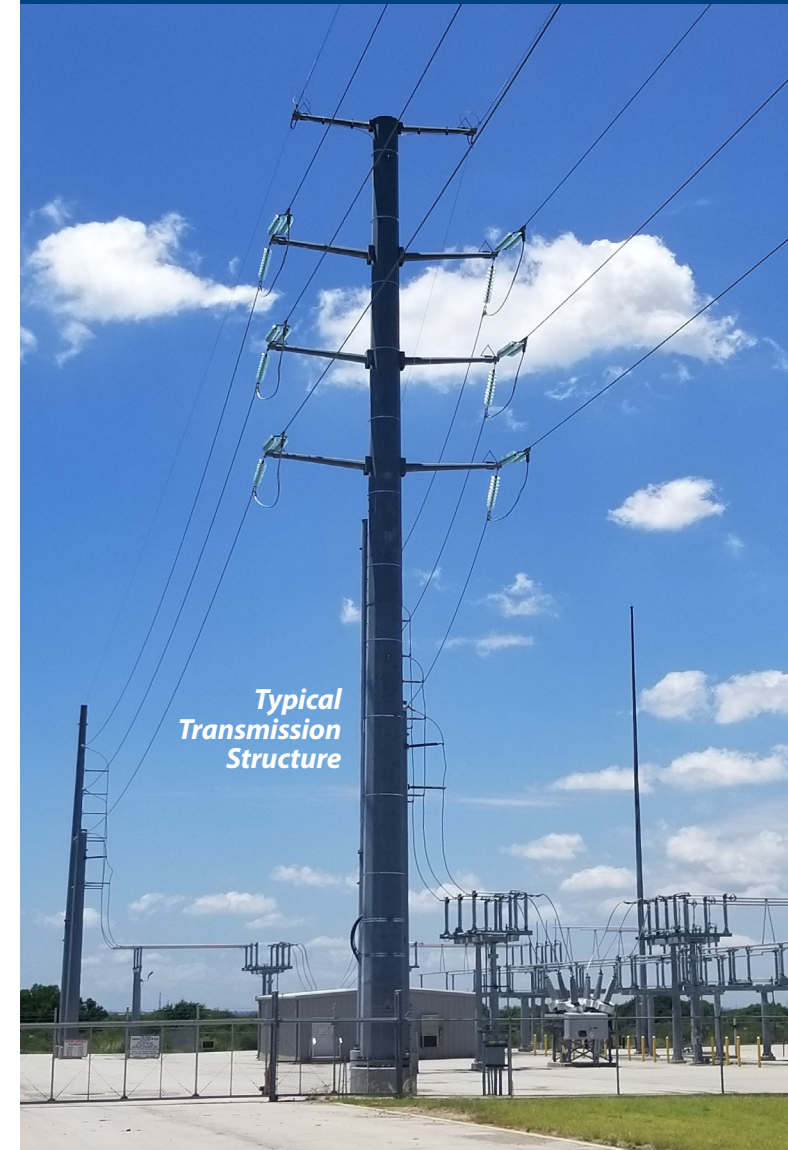
CPS Energy

Antonio DeMendonca, Project Manager
Buckeye to LA Heights
Transmission Line Rebuild
Mail Code 100311
P.O. Box 1771
San Antonio, Texas 78296-1771
(210) 353-5318
ademendonca@cpsenergy.com



BUCKEYE TO LA HEIGHTS

TRANSMISSION LINE REBUILD PROJECT



*Typical
Transmission
Structure*

INFORMATION ABOUT THE BUCKEYE TO LA HEIGHTS TRANSMISSION LINE REBUILD

What is the Buckeye to LA Heights Transmission Line Project?

This project will rebuild an existing single circuit of 138kV transmission (power) line between our Buckeye and LA Heights substations. The transmission line route is approximately 2 miles long and begins at the Buckeye Substation, near the intersection of West Avenue and Edgebrook Lane. The line proceeds south from the substation along West Avenue to the LA Heights Substation near the intersection of West Avenue and West Hildebrand Avenue. See project map for details. It involves completely removing and rebuilding the transmission line including foundations, transmission structures (poles) and electrical wires. The existing lattice (webbed) structures will be replaced with steel poles.

*Construction scheduled to begin October 12, 2020.
Scheduled completion date is May 2021.*

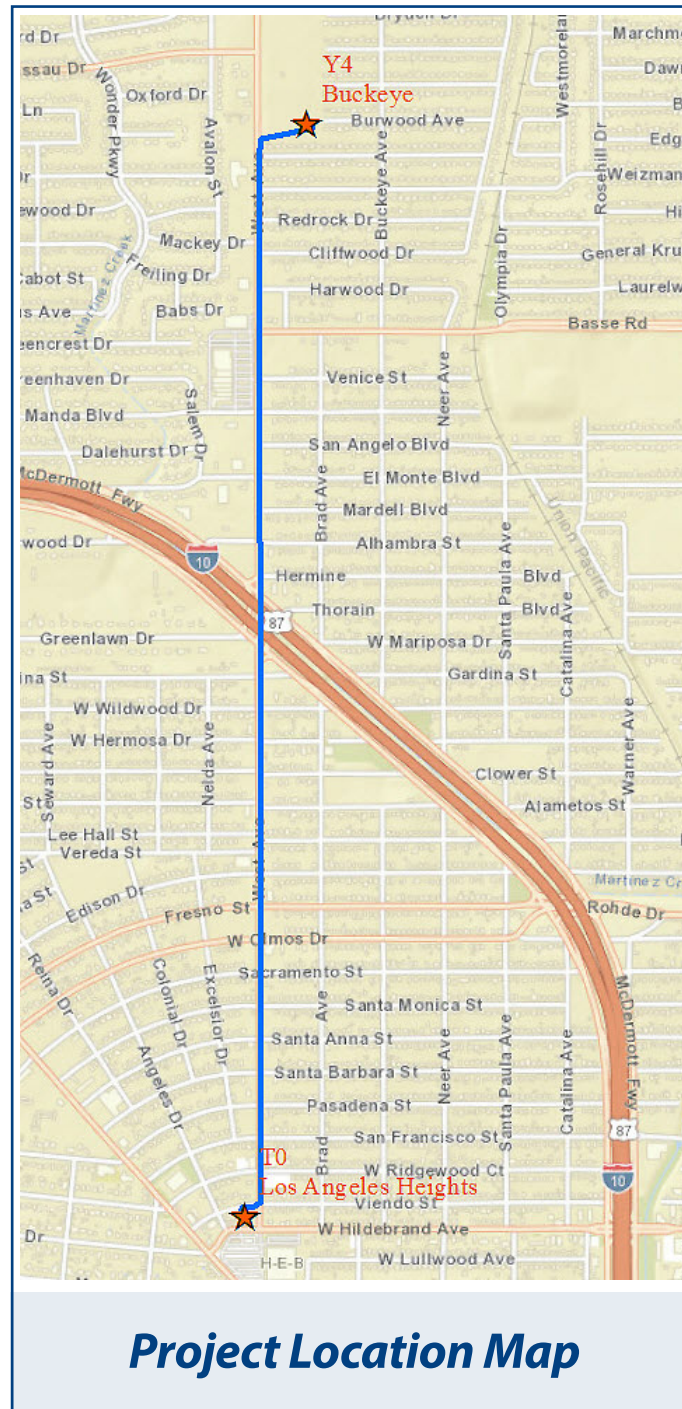
How might this project affect you?

Our contractor will work to minimize impact to area residents. Construction activities will be focused around the existing transmission line route shown on the Project Location Map.

Activities that may be typical during the construction project are the presence of construction equipment and materials as well as temporary partial road closures while construction is in progress.

Why is this project needed?

Maintaining our customers' need for reliable electric power is of utmost importance. The project will improve the quality and safety of an aging transmission line and help ensure electric reliability between the Buckeye and LA Heights substations.



Examples of Transmission Line Structures.



Lattice Structure



Solid Pole Structure